



President's Letter

I am returning from Florida the end of April and will be on Nauset heights for the first Event of the Season: The Spring Clean Up. The date, April 30th, is earlier this year as a suggestion was made to have the clean up a few weeks sooner before many bushes have begun to fill out. This way we can see and get to trash more easily. Let's see how it works.

I am really hopeful that we have put Covid behind us and we will have a full slate of events and they will be well attended. Our signature event is the Lawn Party and it is scheduled for July 23rd this summer. This event is scheduled one summer in July and the next summer in August since some families are here only in July and some only in August. Last summer we changed the format and appetizers were provided along with the Raw Bar and wine, beer and soft drinks, while supporting local businesses. The change was well received and 250 people attended!

Other events planned include an Environmental Program, Donut Dip, Sand Sculpture Contest, Golf Outing, Family Beach Bonfire, Tennis Round Robin, and two Member Meetings. The last event is the Fall Clean Up! Details for all of these events will be sent to you in emails.

There are now over 200 member families of the Nauset Heights Association and I hope you will enjoy your time at our very special place, Nauset Heights.

Ann Farnham Deming
NHA President



Heralding the arrival of Spring

This sequence of images from the Nauset Spit webcam bears witness to the arrival of spring in Nauset Heights. To view the webcam live, go to <https://www.nausetheights.org/spitcam/>.



February 14, 2022

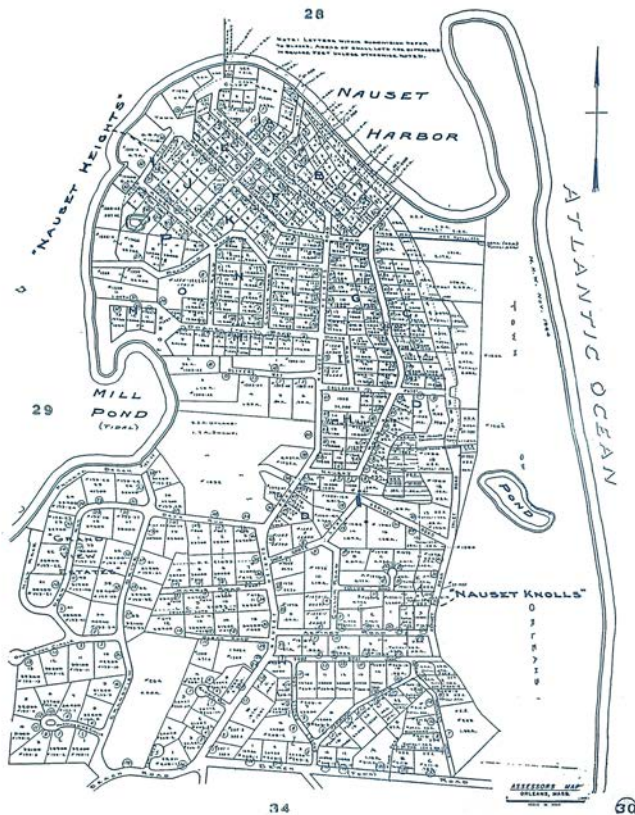


March 10, 2022



April 22, 2022

Nauset Heights: How it Started, How it's Going...



Original design of Nauset Heights c. 1915



Google Maps c. 2022

The original vision for lower Nauset Heights was incorporated in a subdivision plan laid out for the Seaver Brothers of Jamaica Plain in 1915. The Seavers had bought ninety acres of farm land from Oliver Doane in 1890. Most of the new building lots were 80 feet wide by 100 feet deep, costing about \$150 each, and accessible by horse and buggy. The Doane home and farm retained about twenty acres.

At that time, Cliff Road extended along Nauset Bluff from Priscilla Beach (known soon after as Bixby's Beach) to beyond Callanan's Pass (known then as Beach Road). There were just six homes along Cliff Road and four more along Nauset Road with unobstructed views in all directions and access to Nauset Beach.

To the south, the upper portion of Nauset Heights, known later as Nauset Knolls, included just three homes along Nauset Heights Road and the Ship's Knees Inn. The Inn's property encompassed an eighteen-acre farm extending down Nauset Heights Road as far as Fox Run Trail.

About a third of today's homes were built by the early 1950s, with most of the remainder built by 2000. Nauset Heights Road became the primary access route, and is one of only three Town roads on the Heights. Doane Road and a lower portion of Priscilla Road are the other two. There are now two Town Landings, one each at the end of Doane and Priscilla roads. Today there are more than two hundred homes and virtually no building lots remaining.

The Cape Cod National Seashore was founded in 1961, helping to preserve Nauset Beach, together with the Town of Orleans, for future generations. However, the westward encroachment of the Atlantic Ocean over the past one hundred years is clearly shown in the two maps to the left. The barrier beach is now much wider, the Inlet is three miles to the north, and Nauset Harbor is less than a quarter of its prior size.

Attracting Birds and Bees to Nauset Heights

A Tip Sheet on Pollinators and Plants

Tip #1: Be a conscious consumer when you are choosing plants

Avoid purchasing plants known to be invasive such as privet, ivy, vinca, and bamboo. Nurseries still sell them and getting rid of them is very difficult, so avoid buying them in the first place. Remove the invasive plants plus others such as bittersweet, bush honeysuckle, autumn olive, and grapevine. Replace them with native plants liking the same growing conditions and have pollen and berries that feed native birds and pollinators.

Tip # 2: Reduce lawn size

Lawns require huge quantities of water- 30% of potable water in our country is used for yard irrigation. With the growing frequency of droughts on the Cape, this is no longer sustainable. If you consider your lawn as an area rug, rather than a wall-to-wall carpet, you can reduce some lawn, add some drought resistant natives shrubs and trees on the perimeter, and have more demanding garden plants closer in.

Tip # 3: Let a border or part of your yard grow a bit wild

Birds, butterflies, and bees need shelter to hide from predators, get out of the elements, and rear their young.

Tip #4: Carefully consider what equipment you use to maintain your yard

There are serious health and environmental problems related to chemicals, fertilizers, and gas-fueled landscaping equipment. Why not mow less often, reduce the size of your lawn, stop using chemicals, and switch from gas to battery-powered electric machines? Electric lawn equipment has greatly improved and causes substantially less pollution and noise. Please avoid those whole yard pyrethrum-based mosquito protection sprays which inadvertently kill every insect that the spray contacts, not just female mosquitos.

Tip #5: Reduce artificial light

Minimize outdoor light using timers and motion detectors to avoid disrupting wild creatures' natural cycles and migrating birds.

Authored by Nauset Heights Environmental Committee Member Ann Rickard.

For more information on native plants, go to the Nauset Heights website <https://www.nausetheights.org/>. In the upper right, pull down NHA, and select Environmental Resources.

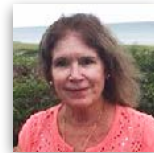
Board of Directors



Mark Ayer
Director '24



King Nelson
Treasurer



Susan Brezina
Director '24



Kathy Pattison
Corresponding Secy



Nancy Case
Director '22



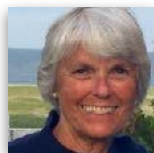
Dave Strickler
Past Pres/Clerk



Bob Colquhoun
Director '23



Richard Thompson
2nd Vice President



Ann Deming
President



Pat Tyng
Recording Secretary



David Duquette
Director '22



Scott Zenke
Director '23



Maura Fitzpatrick
1st Vice President

Member Corner

For 69 years, the mission of the Nauset Heights Association has been to foster a sense of community and cooperation among homeowners to protect and preserve this special place.

At the time of this writing, our association is a record-setting 207 member families strong. Please join us in welcoming our newest members:

Buchsbaum/Klein	56 Nauset Road
Daley	206 Beach Road
Dezi	18 Priscilla Road
Farnham (Bob and Kristen)	31 Nauset Road
Farnham (Chip & Laurie)	31 Nauset Road
Flynn (David & Kim)	1 Nauset Heights Road
Stott	7 Doane Road

The NHA reaches out and welcomes newcomers to our neighborhood. We ask that if you are selling your home or if you know of a neighbor who is selling or has sold their home, please pass along the new owners' information to our general email address: nha@nausetheights.org. The membership committee has created a welcome packet and we'd appreciate your help in making sure we are able to get it into our new neighbors' hands.



July 2021 member meeting

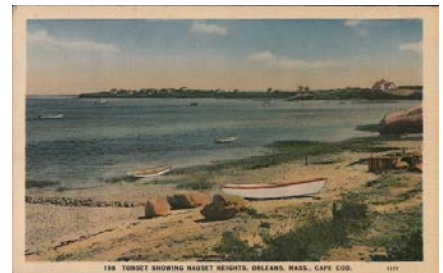


August 2021 member meeting

In remembrance

The following Nauset Heights residents or former residents have passed away since our last newsletter publication. We send our sympathy to their families. They will be dearly missed.

- Theodore Tucker
March 10, 2022



Vintage postcards of Nauset Heights



Like us on
Facebook



Join Nextdoor
Nauset Heights



Nauset Heights Association
PO Box 12
East Orleans, MA 02643
nha@nausetheights.org
www.nausetheights.org